

## TRAVEL INFORMATION

### [AZTI](#)

Herrera Kaia. Portualdea z/g  
20110 – Pasaia (Spain)  
+34 946574000  
GPS coordinates:  
Lat. 43.3217 / Long. -1.9315



## HOW TO GET TO DONOSTIA-SAN SEBASTIÁN

Nearest airports:

### **San Sebastian (Spain) (22 km)**

Operating Iberia, AirNostrum and Vueling (only to and from Madrid and Barcelona, so, you need to go through those airports)

Taxi to San Sebastian €40 approx.

Bus stop in front of the airport every 30 min and takes other 30 min to San Sebastian.

### **Biarritz (France) (49 km)**

International Airport.

Operating Ryanair, Air France, Hop!, Flybe, EasyJet, Finnair, etc., to many destinations

Taxi to San Sebastian €75 approx.

[Bus Alsa](#)

### **Bilbao (Spain) (103 km)**

International Airport

Operating plenty of airlines: Iberia, British, Aer Lingus, Air Berlin, Air France, Alitalia, Brussels Airlines, KLM, Lufthansa, EasyJet, Norwegian, TAP, Turkish Airlines, etc., flying to main destinations all around Europe.

Taxi €120 approx.

There is a bus stop in front of the airport entrance, with a service each hour, and takes 1 hour to San Sebastian (€15 approx.). It is better to reserve the [ticket in advance](#). When selecting the origin be in mind that LOIU is the Bilbao airport location to be selected, and destination is Donostia-San Sebastian.

## HOW TO GET FROM DONOSTIA-SAN SEBASTIÁN TO AZTI-Pasaia

### LURRALDEBUS Bus service

The direct service is the E09 line.

Buses depart every 15 minutes from Okendo street stop, in Donostia-San Sebastian. You need to get off the bus at Mercadillo/Azoka stop, close to AZTI Pasaia premises, which is about a 2-minute walk. The travel is around 15 minutes and the cost is 1.65 euros (to be paid to the bus driver).

### OKENDO Bus stop – line E09

**BY Car with GPS:** [Location](#)

Street: Euskadi Etorbidea

City: Pasaia



## HOTELS

San Sebastian has a lot of hotels in all categories, but medium price is quite high.

You might check the site of the San Sebastian tourism office for [more information](#), city map and booking.

Or in low-cost web pages: [Trivago](#) and [Booking](#)

### RECOMMENDED ACCOMMODATION IN SAN SEBASTIÁN

#### HOTEL LONDRES Y DE INGLATERRA

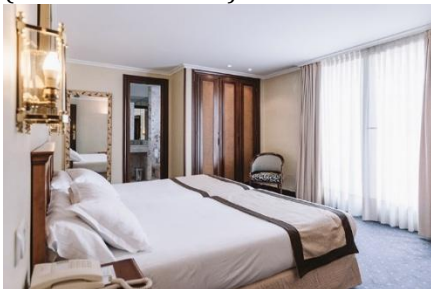


#### HOTEL ARRIZUL



#### HOTEL NH SAN SEBASTIAN

(Breakfast included)



#### HOTEL MONTE ULIA

(this is closer to AZTI, but far from the centre town)



#### HOTEL NIZA (\*\*\*)



#### PENSION GROSEN

(Apartments available)



#### HOTEL EUROPA (\*\*\*)



#### PENSION ALTAIR

(Apartments available)



